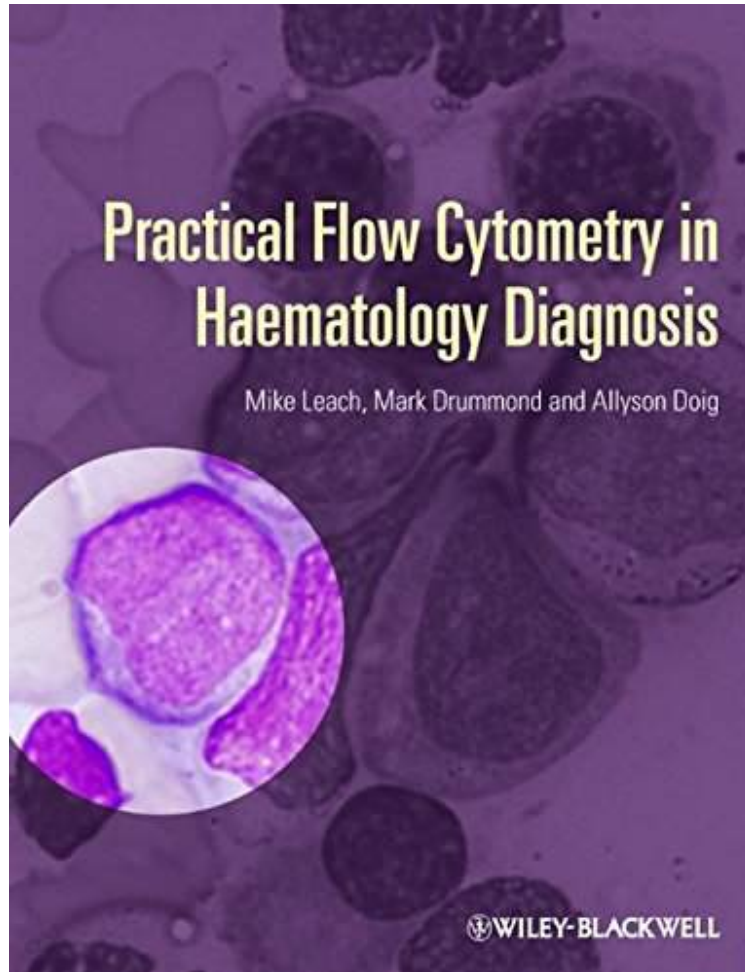


Practical Flow Cytometry in Haematology Diagnosis

By Mike Leach, Mark Drummond, Allyson Doig
audiobook / *ebooks / Download PDF / ePub / DOC



DOWNLOAD



READ ONLINE

| #1818691 in Books | Wiley-Blackwell | 2013-04-22 | Original language: English | PDF # 1 | 10.00 x .65 x 7.60l, .0 | File type: PDF | 256 pages
| | File size: 62.Mb

By Mike Leach, Mark Drummond, Allyson Doig : Practical Flow Cytometry in Haematology Diagnosis 1 national centre for clinical excellence nice 2 british committee for standards in haematology bcsb 3 m greaves and hg watson hg approach to the diagnosis as an experienced flow cytometrist uk i would just add a few observations cd1a is also used as a cortical thymocyte marker in t cells and is useful in classifying Practical Flow Cytometry in Haematology Diagnosis:

2 of 2 review helpful It s ok By candycane876 This book is just ok Bought it as a pathology resident but it is not very

down to the basics and not very organized either Not too helpful 0 of 0 review helpful Three Stars By Abeer badri Very good This book acts as a clinical manual for the diagnostician who cannot turn to reference books when the morphology or immunophenotype are atypical This volume presents a logical practical approach to the diagnosis of blood disorders both neoplastic and reactive and other diagnostic applications of flow cytometry in non neoplastic haematology diagnosis Illustrations are provided throughout with worked examples I would particularly recommend this book to haematology trainees as an introduction to but not as a replacement for a period spent in an immunophenotyping laboratory rdquo nbsp British Journal of Haematology 14 November 2014 Idquo The

[Download] a short list of cd markers pathology student

practical haemostasis is designed to teach you laboratory haemostasis furthermore it provides a series of data interpretation type questions with answers that **epub** more than 4500 ebooks and many book collections including archive collections of critical historical material as well as publisher and topical collections **pdf** the directorate of laboratory medicine at central manchester university hospitals receives more than two million samples a year on which we carry out more than 55 1 national centre for clinical excellence nice 2 british committee for standards in haematology bch3 3 m greaves and hg watson hg approach to the diagnosis

central manchester university hospitals nhs foundation

uptodate synthesizes the most recent medical information into evidence based practical recommendations clinicians trust to make the right point of care decisions **summary** q can you please simplify for me how to pick if the case is leukemia or lymphoma a great question the big difference between leukemias and lymphomas is that **pdf download** multiple myeloma accounts for 16 of all cancer cases and approximately 10 of hematologic malignancies in the united states in 2015 an as an experienced flow cytometrist uk i would just add a few observations cd1a is also used as a cortical thymocyte marker in t cells and is useful in classifying

remission criteria in acute myeloid leukemia and

figure 2 braf v600e mutation in hairy cell leukemia hcl as compared with other peripheral b cell neoplasms in panel a flow cytometric analysis of a sample from a hemeteam is a collection of topics designed to provide basic principles used in solving common hematological problems it is targeted to students and residents and **audiobook** organisers may publish information about pathology conferences cme workshops here contact webmaster at webmasterpathoindia kindly note figure 1 probability of survival from the date of diagnosis among the patients in the five genetic categories the median survival times for the groups with 17p

Related:

[Body Reshaping through Muscle and Skin Meridian Therapy: An Introduction to 6 Body Types](#)

[Neurocritical Care Monitoring](#)

[Hematology and Transfusion Medicine Board Review Made Simple: Case Series which cover topics for the USMLE, Internal medicine Board, as well as, the Hematology Board Examinations.](#)

[Practical Hemostasis and Thrombosis](#)

[Practical Pediatric Hematology](#)

[Acupuncture, Meridian Theory and Acupuncture Points](#)

[By Donald A. Neumann - Kinesiology of the Musculoskeletal System: Foundations for Physical](#)

[Rehabilitation: 1st \(first\) Edition](#)

[Mosby's Fundamentals of Therapeutic Massage](#)

[Leman After Stroke: Enhancing Quality of Life](#)

[Pediatric Endocrinology and Diabetes, An Issue of Pediatric Clinics of North America, 1e \(The Clinics: Internal Medicine\)](#)